



# **FORKLIFT SOLID TYRE**

[solidtire.apexway.com.tw](http://solidtire.apexway.com.tw)





**F1**

**F1** High Loading capacity and outstanding durability.

**SOLID TYRE**

Pattern	Size	Rim Width Inch	O.D. mm	S.W. mm	Weight kgs	Load Capacity kgs@25km/h
F1	3.50-5	2.75/3.00	292	100	5.5	550
F1	15x4 1/2-8 *(125/75-8) *	3.00	381	115	10	850
F1	4.00-8 *	2.50/3.00/3.75	405	105	11	800
F1	16x5-8	3.75	406	125	14	1000
F1	16x6-8 *(150/75-8) *	4.33	415	148	15.5	1150
F1	5.00-8 **	3.00	455	125	16.5	1150
F1	18x7-8 *(180/70-8) *	4.33	455	170	22	1800
F1	140/55-9 **	4.00	380	135	10.5	1000
F1	21x8-9 *(200/75-9) *	6.00	525	190	35	2400
F1	6.00-9 **	4.00	540	150	28	1600
F1	400-10	2.75	410	100	8.5	850
F1	200/50-10 **	6.50	460	205	24.5	1900
F1	6.50-10 **	5.00	575	162	35.5	2000
F1	23x9-10 *(225/75-10) *	6.50	580	210	47	3000
F1	7.50-10	5.50	650	175	53	2500
F1	4.50-12	3.00	535	115	18	1300
F1	23x7-12	5.00	560	174	29.5	1900
F1	23x10-12 **	8.00	580	245	50	3000
F1	23x12-12	10.00	580	295	60	3300
F1	7.00-12 **	5.00	667	170	48	2500
F1	27x10-12 *(250/75-12) *	8.00	675	245	74	3500
F1	8.25-12	5.00	714	188	60.5	3400
F1	5.50-15	4.50	665	155	36	1900
F1	6.00-15	4.50	665	155	36	1900
F1	27x6.5-15	5.50	665	180	42.5	2500
F1	8.15-15 *28x9-15(225/75-15) *	7.00	710	211	62	3000
F1	250-15 *(250/70-15) *	7.00/7.50	710	238	71	3800

Pattern	Size	Rim Width Inch	O.D. mm	S.W. mm	Weight kgs	Load Capacity kgs@25km/h
F1	28x12.5-15 *(355/45-15) *	9.75	718	310	94.5	4800
F1	7.00-15 **	5.50/6.00	740	178	61	3000
F1	7.50-15 **	5.50/6.00	800	184	75	3400
F1	8.25-15 **	6.50	820	206	89	4200
F1	300-15 *(315/70-15) *	8.00	820	260	110	5000
F1	32x12.5-15	9.75	820	300	130	5800
F1	355/65-15 **	9.75	820	300	130	5800
F1	26x8-16	6.00	650	175	43	2700
F1	28x9-16	6.00	717	210	56	3000
F1	7.50-16	5.50/6.00	800	184	73	3400
F1	8.25-16	6.00	845	212	95	4200
F1	9.00-16	7.00	845	237	107.5	4500
F1	8.25-20	6.00/6.50	980	220	125	5000
F1	9.00-20	7.00	980	220	125	5000
F1	10.00-20	7.00/7.50/8.00	1040	250	166	6000
F1	380/70-20	12.00	1040	385	265	9000
F1	16/70-20(405/70-20)	8.50	1050	305	208	7500
F1	11.00-20	7.50/8.00/8.50	1110	265	211	6500
F1	12.00-20	8.00/8.50	1140	295	248	7000
F1	13.00-20	10.00	1140	335	287	8500
F1	14.00-20	10.00	1250	350	380	10000
F1	305/70-24	8.50	1040	305	176	7500
F1	12.00-24	8.00/8.50	1210	304	264	7800
F1	13.00-24	8.50	1250	320	315	8800
F1	14.00-24	10.00	1320	340	386	10500
F1	14.00-25	10.00/11.25	1320	340	386	10500
F1	16.00-25	11.25	1500	410	635	13000

\*White, Grey, Green Non-Marking and Click Tyres are available upon request.



## F1H

**F1H** Good resilience feature for comfortable ride.

Pattern	Size	Rim Width inch	O.D. mm	S.W. mm	Weight kgs	Load Capacity kgs@25km/h
F1H	18x7-8(180/70-8)	4.33	455	170	21.2	1620
F1H	5.00-8	3.00	457	120	15.5	1035
F1H	21x8-9(200/75-9)	6.00	525	184	32.2	2160
F1H	6.00-9	4.00	540	150	27.5	1440
F1H	6.50-10	5.00	575	160	34.5	1800
F1H	7.00-12	5.00	667	170	48	2250
F1H	8.15-15 28x9-15(225/75-15)	7.00	710	210	61	2700
F1H	250-15(250/70-15)	7.00/7.50	710	238	70.5	3420
F1H	300-15(315/70-15)	8.00	840	280	116	4500
F1H	8.25-15	6.50	845	212	96	3780
F1H	7.50-16	6.00	800	195	72	3060
F1H	8.25-20	6.00/6.50	980	220	123	4500
F1H	9.00-20	7.00	980	220	123	4500
F1H	10.00-20	7.00/7.50/8.00	1040	250	163	5400
F1H	11.00-20	7.50/8.00/8.50	1110	265	208	5850
F1H	12.00-20	8.00/8.50	1140	295	245	6300
E1	15x4 1/2-8(125/75-8)	3.00	375	110	9.5	850
E1	16x6-8(150/75-8)	4.33	405	145	15	1150
E1	18x7-8(180/70-8)	4.33	445	155	20	1800
E1	5.00-8	3.00	445	120	15	1150
E1	140/55-9	4.00	375	130	10	1000
E1	6.00-9	4.00	520	145	25.5	1600
E1	21x8-9(200/75-9)	6.00	515	180	32	2400
E1	200/50-10	6.50	450	195	23.5	1900
E1	17 3/4x6 1/2-10	5.00	450	165	18.6	1500
E1	180/60-10	5.00	450	165	18.6	1500
E1	6.50-10	5.00	560	155	32	2000
E1	23x9-10(225/75-10)	6.50	565	200	45.5	3000
E1	7.00-12	5.00	640	165	43	2500
E1	23x10-12	8.00	570	235	48	3000
E1	27x10-12(250/75-12)	8.00	670	235	71	3500
E1	22 1/4x7 1/2-15	5.50	565	190	27.6	2400

## E1

**E1** High traction and non-puncture ability.

## I1

**I1** Excellent traction ability.

Pattern	Size	Rim Width inch	O.D. mm	S.W. mm	Weight kgs	Load Capacity kgs@25km/h
E1	5.50-15	4.50	650	145	34.5	1900
E1	6.00-15	4.50	680	150	42	1900
E1	8.15-15 28x9-15 (225/75-15)	7.00	680	210	54	3000
E1	250-15(250/70-15)	7.00/7.50	710	225	70	3800
E1	7.00-15	5.50/6.00	720	175	58	3000
E1	7.50-15	5.50/6.00	745	190	67	3400
E1	8.25-15	6.50	800	200	82	4200
E1	300-15	8.00	800	250	103	5000
E1	8.25-20	6.00/6.50	980	220	126	5000
E1	9.00-20	7.00	980	220	126	5000
E1	10.00-20	7.00/7.50/8.00	1010	250	159	6000
E1	11.00-20	7.00/7.50/8.00	1040	250	170	6500
E1	12.00-20	7.50/8.00/8.50	1090	265	207	7000
E1	12.00-24	8.00/8.50	1200	300	268	7800
E1	14.00-24	10.00	1330	350	413	10500
E1	14.00-25	10.00/11.25	1330	350	408	10500
I1	15x4 1/2-8(125/75-8)	3.00	380	115	9.5	850
I1	16x6-8(150/75-8)	4.33	411	150	15.5	1150
I1	5.00-8	3.00	457	130	17.5	1150
I1	18x7-8(180/70-8)	4.33	457	165	21.5	1800
I1	6.00-9	4.00	520	158	27.5	1600
I1	21x8-9(200/75-9)	6.00	528	190	34.5	2400
I1	200/50-10	6.50	462	195	24	1900
I1	6.50-10	5.00	583	166	38	2000
I1	23x9-10(225/75-10)	6.50	588	210	49	3000
I1	23x10-12	8.00	588	240	51	3000
I1	7.00-12	5.00	660	170	48	2500
I1	27x10-12(250/75-12)	8.00	685	240	76	3500
I1	8.15-15 28x9-15(225/75-15)	7.00	710	212	63	3000
I1	250-15(250/70-15)	7.00/7.50	751	240	79.5	3800
I1	8.25-15	6.50	832	210	93	4200
I1	300-15(315/70-15)	8.00	832	265	117	5000

**SOLID TYRE**



### Z1

**Z1** Puncture resistant and high loading capacity.

Pattern	Size	Rim Width Inch	O.D. mm	S.W. mm	Weight kgs	Load Capacity kgs@25km/h
Z1	14.00-24	10.00	1350	360	406	10500
Z1	14.00-25	10.00	1350	360	402	10500
Z1	18.00-25	13.00	1615	490	885	15000

**SOLID TYRE**



### R1

**R1** Lower rolling resistance and fuel consumption.

### S1

**S1** Fuel economy and low rolling resistance.

Pattern	Size	Rim Width Inch	O.D. mm	S.W. mm	Weight kgs	Load Capacity kgs@25km/h
R1	3.50-5	2.75/3.00	292	100	6.4	550
R1	13x4-5	2.75	314	96	5.5	550
R1	12x4-8	3.00	323	100	5.3	650
R1	15x4-8	3.00	378	91	6.5	760
R1	4.00-8	2.50/3.00/3.75	406	108	11.5	800
R1	4.80-8	3.00/3.75	406	115	12.8	900
R1	16x5-9	3.50	406	125	12	1100
R1	16x5-12	3.75	406	124	7.5	850
R1	6.00-20	4.50	850	160	60	3500
S1	18x7-8(180/70-8)	4.33	455	170	24	1800
S1	5.00-8	3.00	457	125	17.5	1150
S1	21x8-9(200/75-9)	6.00	525	190	36.5	2400
S1	6.00-9	4.00	540	150	29.5	1600
S1	6.50-10	5.00	575	160	37	2000
S1	23x9-10(225/75-10)	6.50	580	220	51	3000
S1	7.00-12	5.00	667	170	49.5	2500
S1	205/60-15	5.50	630	200	42	2800
S1	8.15-15 28x9-15(225/75-15)	7.00	710	211	64	3000
S1	8.25-15	6.50	838	210	96	4500
S1	355/50-20	10.00	863	315	131	6800
S1	9.00-20	7.00	980	220	135	5000
S1	10.00-20	7.00/7.50/8.00	1040	250	178	6000
S1	12.00-20	8.00/8.50	1110	265	220	7000
S1	12.00-24	8.00/8.50	1200	295	268	7800
S1	14.00-24	10.00	1340	350	431	10500
S1	16.00-25	11.25	1500	410	654	13000
S1	18.00-25	13.00	1610	460	880	15000



**SM**

**TR**

**PRESS ON TYRE**

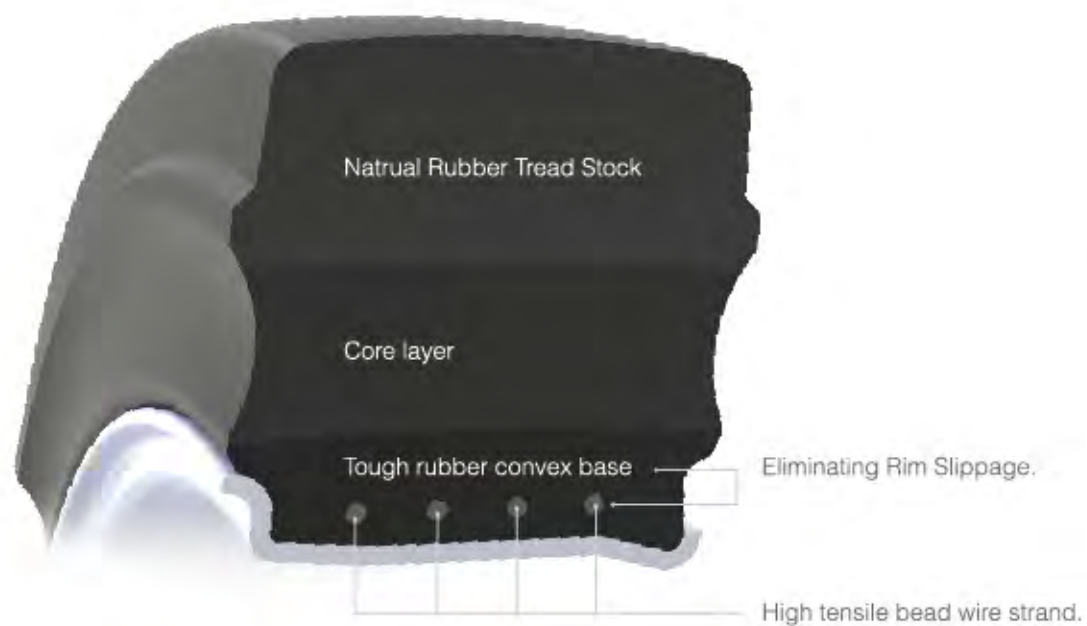
Pattern	Size	Overall Diameter mm/inch	Overall Width mm/inch	Inside Diameter mm/inch	Load Capacity			
					Steering Wheel		Load Wheel	
					kgs@10km/h	kgs@16km/h	kgs@10km/h	kgs@16km/h
TR / SM	10x4x6 1/2	254.0/10.0	101.6/4.0	165.1/6.5	640	580	720	635
TR / SM	12x4 1/2x8	304.8/12.0	114.3/4.5	203.2/8.0	865	780	970	860
TR / SM	15x5x11 1/4	381.0/15.0	127.0/5.0	285.8/11.3	1150	1140	1290	1230
TR / SM	16x5x10 1/2	406.0/16.0	127.0/5.0	266.7/10.5	1250	1240	1400	1340
TR / SM	16x6x10 1/2	406.0/16.0	152.0/6.0	266.7/10.5	1580	1570	1780	1700
TR / SM	16x7x10 1/2	406.0/16.0	178.0/7.0	266.7/10.5	1910	1898	2150	2060
TR / SM	16 1/4x5x11 1/4	413.0/16.3	127.0/5.0	285.8/11.3	1260	1250	1415	1350
TR / SM	16 1/4x6x11 1/4	413.0/16.3	152.0/6.0	285.8/11.3	1580	1570	1780	1710
TR / SM	18x5x12 1/8	457.0/18.0	127.0/5.0	308.0/12.1	1360	1350	1530	1460
TR / SM	18x6x12 1/8	457.0/18.0	152.0/6.0	308.0/12.1	1740	1720	1950	1860
TR / SM	18x7x12 1/8	457.0/18.0	178.0/7.0	308.0/12.1	2110	2100	2370	2270
TR / SM	18x8x12 1/8	457.0/18.0	203.0/8.0	308.0/12.1	2480	2470	2790	2670
TR / SM	18x9x12 1/8	457.0/18.0	229.0/9.0	308.0/12.1	2860	2840	3215	3070
TR / SM	21x7x15	533.0/21.0	178.0/7.0	381.0/15.0	2380	2360	2670	2550
TR / SM	21x8x15	533.0/21.0	203.0/8.0	381.0/15.0	2795	2780	3110	3000
TR / SM	21x9x15	533.0/21.0	229.0/9.0	381.0/15.0	3220	3200	3620	3460
TR / SM	22x8x16	559.0/22.0	203.0/8.0	406.4/16.0	2900	2880	3260	3110
TR / SM	22x9x16	559.0/22.0	229.0/9.0	406.4/16.0	3340	3320	3750	3590
TR / SM	22x12x16	559.0/22.0	305.0/12.0	406.4/16.0	4660	4630	5235	5000
TR / SM	28x12x22	711.0/28	305.0/12	558.8/22	5580	5550	6270	5990
TR / SM	28x16x22	711.0/28	406.4/16	558.8/22	7685	6940	8635	7640

*White, Grey, Green Non-Marking tyres are available upon request.*





# Click Tyre



**Click Tyres also available.**

With a special design "Lip" base, The Click tyre can easily and quickly fit on the rim which without flange rings and lock rings.

Special Compounds, **Non-Marking, Anti-Static, Oil Resistant**, are available upon request.





Latest data updates please go to "[solidtire.apexway.com.tw](http://solidtire.apexway.com.tw)".  
Other sizes are available, consult APEXWAY for further information.

## **APEXWAY PRODUCTS CORP.**

Taiwan Head Office: 14F-5, No. 238, Shizheng N. 2nd Rd.,  
Xitun Dist., Taichung City 40756 Taiwan, R.O.C

Tel:+886-4-2251-2251

Fax:+886-4-2251-2129

E-mail:[apex@apexway.com.tw](mailto:apex@apexway.com.tw)

[solidtire.apexway.com.tw](http://solidtire.apexway.com.tw)

**2018**